



PLC ▲ Southern Poverty Center

About the Southern Poverty Law Center

The Southern Poverty Law Center (SPLC) is a 501(c)(3) nonprofit organization that monitors and exposes individuals, groups, and organizations that promote and engage in hate speech and extremist activities. The SPLC is a national leader in the fight against hate and extremism.

...

FOR MORE INFORMATION, VISIT
THE ● HEN ● E ● LA ● CEN ● E

WEBSITE AT [WWW.SPLCENTER.ORG](http://www.splcenter.org)

OR CALL 1-800-388-3033

OR VISIT [WWW.SPLCENTER.ORG](http://www.splcenter.org)



@splcenter



Facebook/SPLCenter



THE EXPLOITATION OF
J-1 CULTURAL EXCHANGE WORKERS



E EC E, A

"A
E
M D D H
J,
M J,
J, I J,
J, E
C
F A
D
B I
E
-E -F J,
M
J,
J,

... ..



... .. -F

J, LC

... .. A
D

J, -F

J,

J,

B, -I
D

J,

D
-J, -A

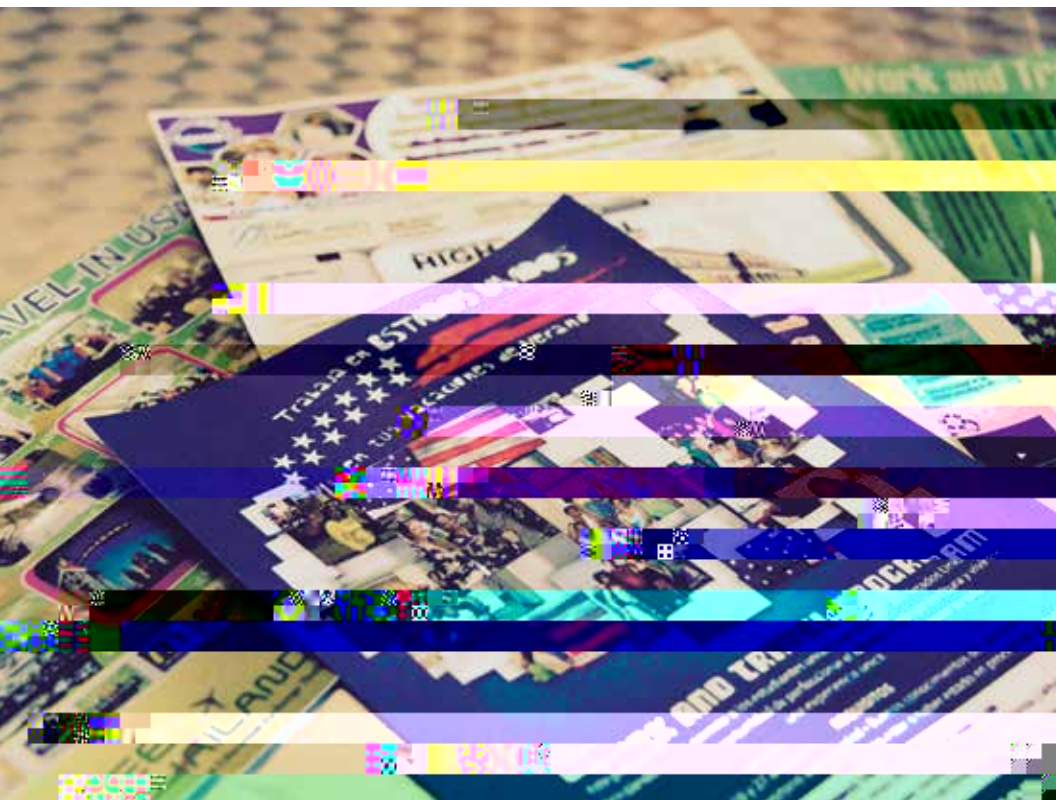
... .. -E
J,

J,

I
J
J
J
J
I
J
B LC LC
A
J
H B
J
J

J-V-E V-P-?

J, E, C
-N
J,
J,
J,
I,
-B.



K ...

 ... **J-** ...

☉ M ...
I ...
...
...
...

☉ J, ... D ... ●
...
... D ... L ...
...
...

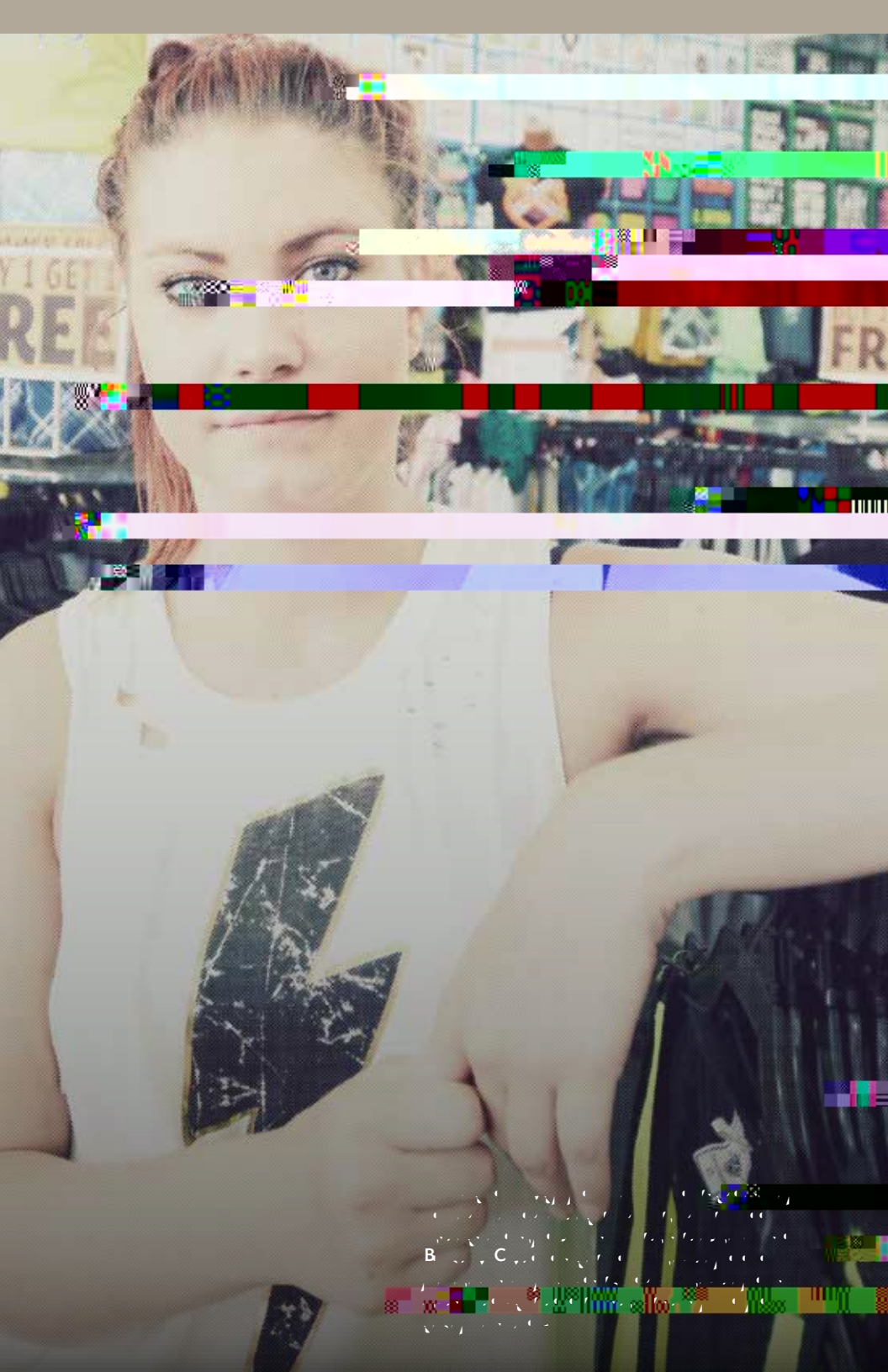
☉ ... I ...
... D ...
...
...
...

☉ ... J,
...
...
...
...

☉ ...
... D ...
...
...
...

, EC E

Foreign students deceived, exploited with little recourse



B C

Handwritten text, possibly a header or address, including a date-like structure "1955-1956".

Handwritten text containing several lines of a letter or document. The words "K", "J", "B", "B" are clearly visible in the middle section.

Handwritten text at the bottom of the page, including the letters "LC".

E

LC

I

J

I

I

E

C

J

M

D

H

G

A

-H

I

J

N

G

A

H

NGA

-I

C

I

I

J

M D

H

NGA

A

F

A

C

A

J

D

D

sponsors,

-E

D

J

LC

D

J

-I

LC

D

G

D

D

G

I

A

G

IG

J,

A

IG

B

J,

D

L

-J,

-L

J,

D

U.S.

J-

J,

J,

J,

B

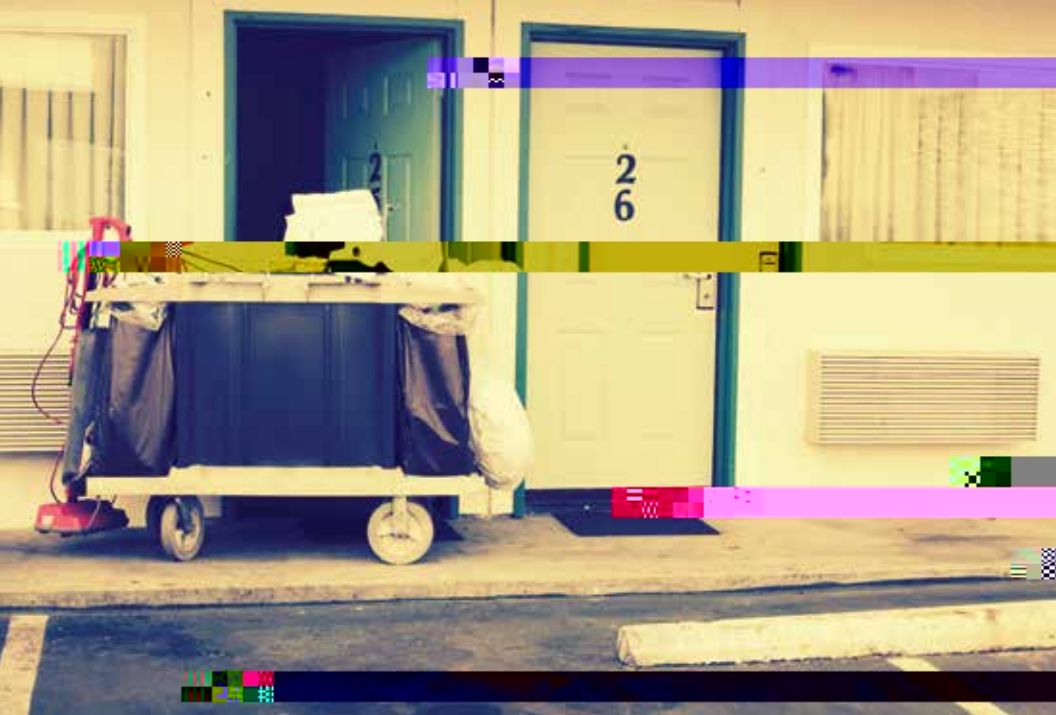
I

-I

A

-I

1917
A
1918
1919
1920
1921
1922
1923
1924
1925
1926
1927
1928
1929
1930
1931
1932
1933
1934
1935
1936
1937
1938
1939
1940
1941
1942
1943
1944
1945
1946
1947
1948
1949
1950
1951
1952
1953
1954
1955
1956
1957
1958
1959
1960
1961
1962
1963
1964
1965
1966
1967
1968
1969
1970
1971
1972
1973
1974
1975
1976
1977
1978
1979
1980
1981
1982
1983
1984
1985
1986
1987
1988
1989
1990
1991
1992
1993
1994
1995
1996
1997
1998
1999
2000
2001
2002
2003
2004
2005
2006
2007
2008
2009
2010
2011
2012
2013
2014
2015
2016
2017
2018
2019
2020
2021
2022
2023
2024
2025



, EC

Summer Work Travel students end up cleaning rooms with no cultural exchange opportunities

D
LC
B
J
-H
D
G
-A

M

-C

-M

A A F A C A . . . D E F . . . E D . . . C A E B C



J, A . . .

A . . .

A . . . E . . .

-I . . . E . . . L . . . A . . .

-L . . . A . . .

A . . . -L . . .

L . . .

-L . . . L . . .

-I . . .

-I . . .

● . . . A . . .



1. **A** *... ..*
 2. **D** *... ..*
 3. *... ..*
 4. *... ..*
 5. *... ..*
 6. *... ..*
 7. *... ..*
 8. *... ..*
 9. *... ..*
 10. *... ..*
 11. *... ..*
 12. *... ..*
 13. *... ..*
 14. *... ..*
 15. *... ..*
 16. *... ..*
 17. *... ..*
 18. *... ..*
 19. *... ..*
 20. *... ..*

21. *... ..*
 22. *... ..*
 23. *... ..*
 24. *... ..*
 25. *... ..*
 26. *... ..*
 27. *... ..*
 28. *... ..*
 29. *... ..*
 30. *... ..*
 31. *... ..*
 32. *... ..*
 33. *... ..*
 34. *... ..*
 35. *... ..*
 36. *... ..*
 37. *... ..*
 38. *... ..*
 39. *... ..*
 40. *... ..*
 41. *... ..*
 42. *... ..*
 43. *... ..*
 44. *... ..*
 45. *... ..*
 46. *... ..*
 47. *... ..*
 48. *... ..*
 49. *... ..*
 50. *... ..*

A *... ..*
B *... ..*
C *... ..*
D *... ..*
E *... ..*
F *... ..*
G *... ..*
H *... ..*
I *... ..*
J *... ..*
K *... ..*
L *... ..*
M *... ..*
N *... ..*
O *... ..*
P *... ..*
Q *... ..*
R *... ..*
S *... ..*
T *... ..*
U *... ..*
V *... ..*
W *... ..*
X *... ..*
Y *... ..*
Z *... ..*

I *... ..*
L *... ..*
M *... ..*
N *... ..*
O *... ..*
P *... ..*
Q *... ..*
R *... ..*
S *... ..*
T *... ..*
U *... ..*
V *... ..*
W *... ..*
X *... ..*
Y *... ..*
Z *... ..*

L *... ..*
D *... ..*
E *... ..*
F *... ..*
G *... ..*
H *... ..*
I *... ..*
J *... ..*
K *... ..*
L *... ..*
M *... ..*
N *... ..*
O *... ..*
P *... ..*
Q *... ..*
R *... ..*
S *... ..*
T *... ..*
U *... ..*
V *... ..*
W *... ..*
X *... ..*
Y *... ..*
Z *... ..*

L *... ..*
D *... ..*
E *... ..*
F *... ..*
G *... ..*
H *... ..*
I *... ..*
J *... ..*
K *... ..*
L *... ..*
M *... ..*
N *... ..*
O *... ..*
P *... ..*
Q *... ..*
R *... ..*
S *... ..*
T *... ..*
U *... ..*
V *... ..*
W *... ..*
X *... ..*
Y *... ..*
Z *... ..*

C. ... M ... S.



C
A
C

S. D

A
J
J
I
A
M B C

● M B ● J J
-A
-H
J -E

1. **Introduction**: This report describes the results of an experiment conducted to determine the effect of temperature on the rate of reaction between hydrogen peroxide and potassium iodide. The experiment was carried out at three different temperatures: 10°C, 20°C, and 30°C. The rate of reaction was measured by the time taken for a fixed amount of iodine to be produced. The results show that the rate of reaction increases with increasing temperature.



An experiment was conducted to determine the effect of temperature on the rate of reaction between hydrogen peroxide and potassium iodide. The experiment was carried out at three different temperatures: 10°C, 20°C, and 30°C. The rate of reaction was measured by the time taken for a fixed amount of iodine to be produced. The results show that the rate of reaction increases with increasing temperature.

EC

Interns and trainees misled, used as cheap labor

M... J... I...
... " ...
... "

B

A A... A EEF E A



I

-B I

I

H

J,

-I

A

B

I

-I

-I

M

D

J,

J,

I

1. $\frac{1}{2} \frac{d}{dt} \int_{\Omega} |\nabla u|^2 dx - E(u) = \int_{\Omega} u \frac{d}{dt} \int_{\Omega} |\nabla u|^2 dx - E(u)$

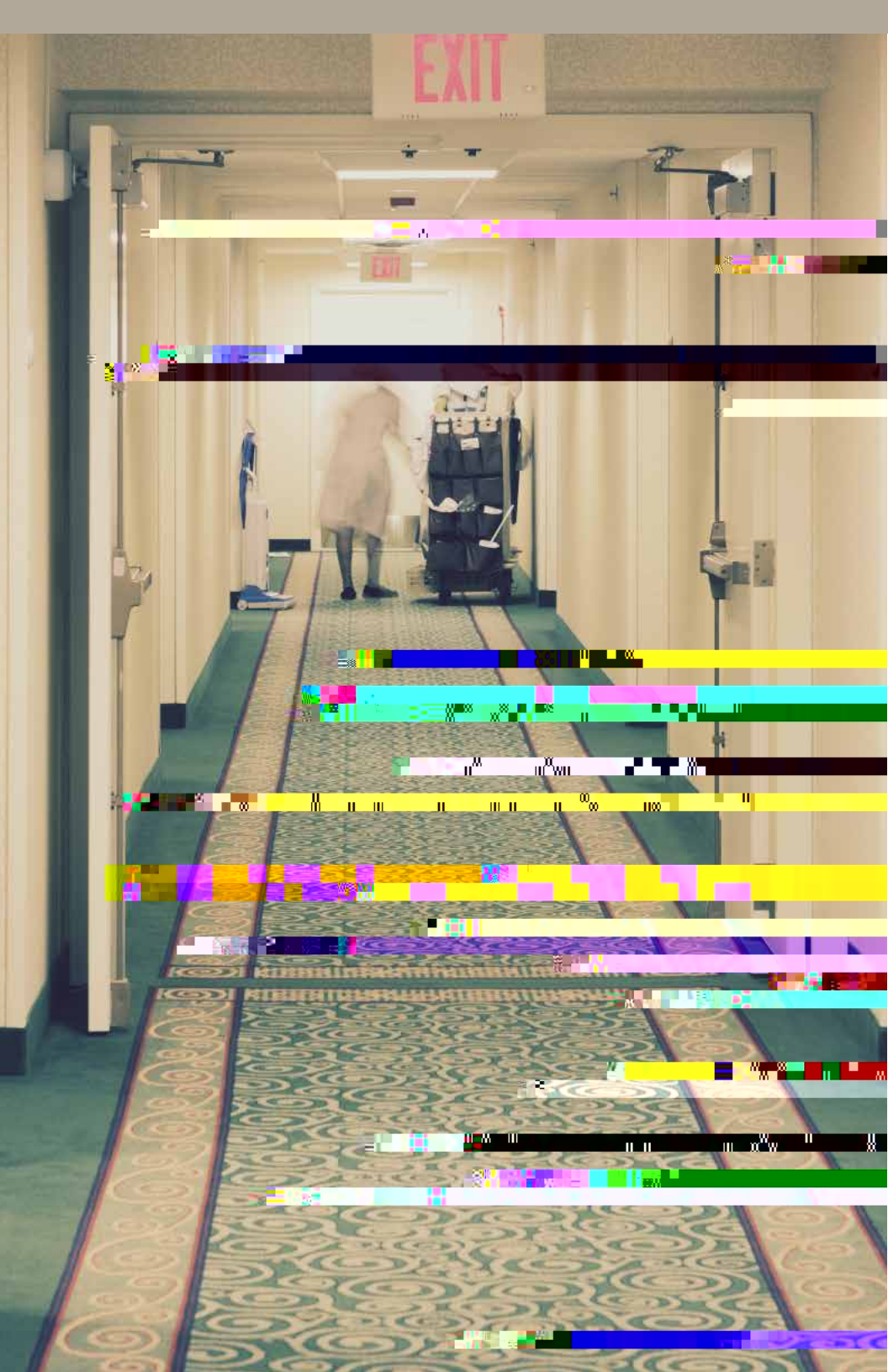
L
A
I
F
A. D
J, I
E -A
J
I -I
A



... A A, E A A A... A EEF ... A A D



F
E J, -B
-I
I
A F E
M B -C
I I I
I -B I I
H
F
J, D L
D L F J,
I I I I
J,



J-1 workers vulnerable to trafficking, other dangers

J, I, E, D, J, D, J, D, B, M, H, B, A, F, L, A, H, B, J, J,

A

AB A AA EF E A E



C

J

-N

J-



J

I

M

A



C

B

C

J

I

B

J

A

L

B

J

C

-N

-I

B

A

E

J

LC

-A

M

H

J



G

A

-H

J



A
J -H
-H
-H
B
D
A N
LC
J -F



New laws, regulations required to protect J-1 foreign exchange students and U.S. workers

J, E ... -F ... I ...
A ... J, ...
J, ... -I ... -C ... D ...

RECOMMENDATIONS FOR THE SUMMER WORK TRAVEL AND TRAINEE AND INTERN PROGRAMS

I. R ... C ...

- ... J, ...
- ... J, ...

- D ... L ... J, ... J,
- A ... D ... L ... J,
- ... J, ... -F ... J,
- ... J,
- I ... J,
- G ... J,
- M ... J,

II. R ... TD ... D ...

→ J, $\frac{1}{2} \frac{d}{dt} \left(\frac{1}{2} m v^2 \right) = \frac{1}{2} m v \frac{dv}{dt} = \frac{1}{2} m v a$

→ $\frac{1}{2} m v^2 = \frac{1}{2} m \int a dt = \frac{1}{2} m \int \frac{dv}{dt} dt = \frac{1}{2} m \int dv = \frac{1}{2} m v + C$

→ E = $\frac{1}{2} m v^2 + \frac{1}{2} m \int dv = \frac{1}{2} m v^2 + \frac{1}{2} m v + C$ J, H
J, H

→ D L D

→ I J, J,

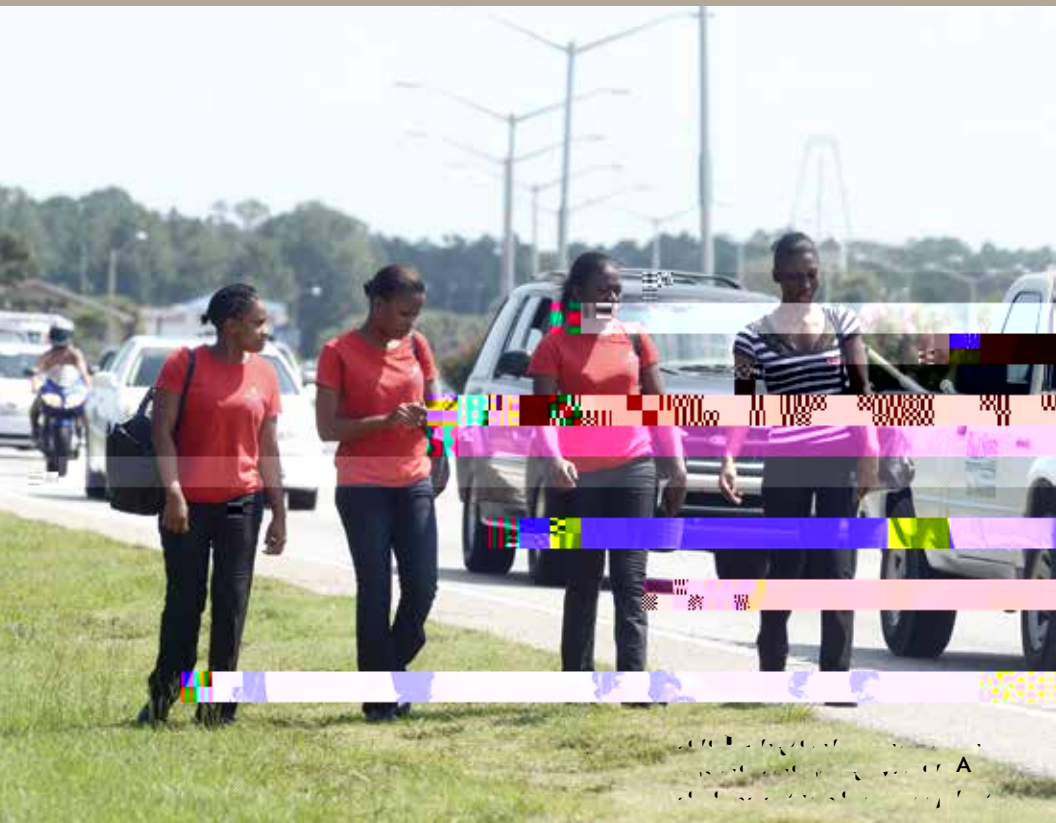
III. R T I P ☒ :

→ F L A -

→

→

→ D D L



E D E,

1 22 U.S.C. § 2451.

2 26 U.S.C. §§ 3121(b)(19), 3306(c)(19).

3 S. . . Seasonal Staffing Solutions, www.seasonalstaff.org/Tax-Benefits-For-Employers-Hiring-J1-Foreign-Staff.html (“American Employers can legally save 7.79% off their total payroll expenses simply by promoting cultural exchange and hiring J1 students.”) (last visited Nov. 7, 2013).

4 S. . . *U.S. v. S. . . Tr. . . , et al.*, No 11-cr-00614-VM (S.D. N.Y. filed Nov. 17, 2011) (J-1 SWT students forced to work as exotic dancers in New York); *USA v. B. . . a , et al.*, 3:07-cr-00114-LC-2 (N.D. Fla. filed Sept. 18, 2007) (J-1 SWT students used in labor trafficking scheme in the Florida panhandle).

5 U.S. Dep’t of State, *2013 Trafficking in Persons Report* 385-86, www.state.gov/documents/organization/210742.pdf.

6 77 Fed. Reg. 27,593, 27,601 (May 11, 2012) (discussing the SWT program in light of high youth unemployment rates).

7 Fredreka Schouten, *Immigrant Students Face Challenges in Finding Work*, USA Today, June

26, 2013, www.usatoday.com/story/news/politics/2013/06/26/immigration-bill-carveouts-

Oct. 6, 2011, www.theworld.org/2011/10/j-visa-exploiting-foreign-students/.

25 David Wenner, *Foreign Students at Work Exploit Harrisburg, Pa.*, The Patriot-News, March 11, 2013, www.pennlive.com/midstate/index.ssf/2013/03/mcdonalds_foreign_students_che.html.

26 See 22 C.F.R. §§ 62.32, 62.15, App'x D (requiring sponsors to submit annual reports on their activities).

27 See *Swartz et al.*, *supra*, at 38 (discussing the conflict of interest inherent in the SWT program).

28 22 C.F.R. § 62.32(g)(2).

29 U.S. State Dep't, *Closed Sanction Cases 2006 to Date*, j1visa.state.gov/wp-content/uploads/2013/09/Closed-Sanction-cases-2006-to-Date-Master_Final.pdf (last visited Nov. 4, 2013) (<http://www.dhs.gov/xfu/immigration/information/immigration-actives-2013-09-2013-actives>).

46 22 C.F.R. § 62.22(f)(2)(v).

47 *S. v. U.S. State. Trial, et al.*, No 11-cr-00614-VM (S.D. N.Y. filed Nov. 17, 2011) (J-1
SWT students forced to work

To find these stories and more, visit
[**sp.lc/culture-shock-report**](https://sp.lc/culture-shock-report)

SPLC  South

L